

# Moncha.NET Firmware Update

Version:

1.1	25.6.2014	Added information about Master/Slave for Moncha.NET
1.0	1.3.2013	First version of document

## 1. Updating firmware

This document will help you in a process of upgrading Moncha.NET firmware. It's pretty easy process, which can be done almost by anyone. Please follow following steps:

1. Copy "bootldr.cfg" and "mnet.bin" files to FAT32 formatted SD-card.
2. Insert the card to Moncha.NET device.
3. Turn off your Moncha.NET device (or laser system).
4. Turn on the Moncha.NET device (or laser system).
5. Updating will take about 30 seconds and yellow LED must blink when uploading.

## 2. Moncha.NET versions

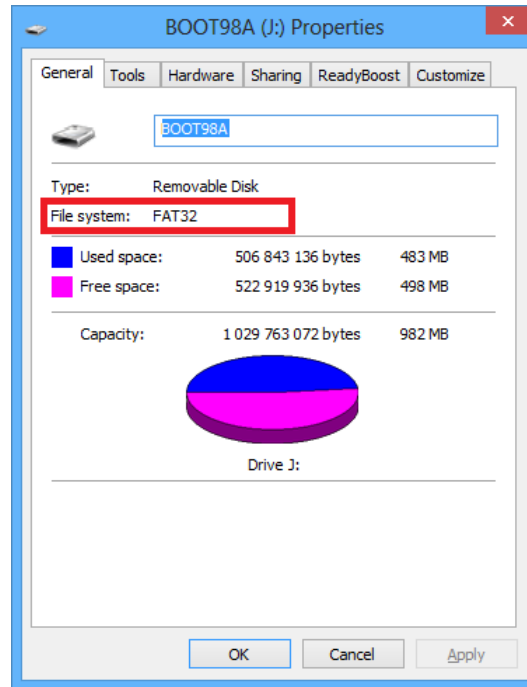
There are currently available 3 versions of Moncha.NET:

- box version
- OEM version integrated into laser
- OEM version integrated into laser with digital potentiometers (you are able to control intensity of every laser on your Moncha.NET display)
- DIP switch version (no display)

Please always ask Showtacle for correct firmware!

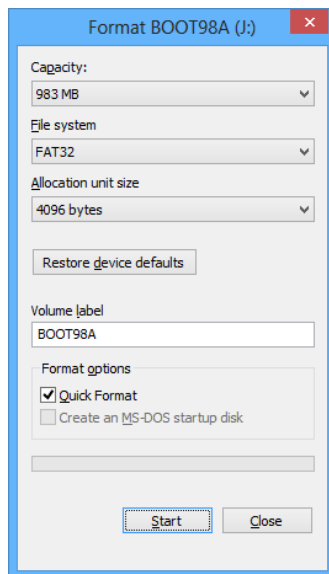
### 3. SD-cards

It is required to use FAT32 formatted SD-card when updating Moncha.NET device. To find out whether your SD-card is using FAT32 please click on your SD-card drive in Windows and choose properties. You should see following dialog:



*FAT32 formatted SD-card*

In case you are using FAT16 SD-card, please format it to FAT32. It's easy process:

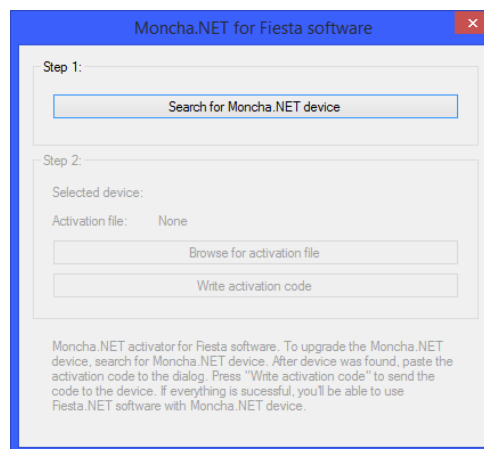


1. Insert your card.
2. Right click on your card's drive in Windows and choose Format.
3. Choose FAT32 in the **File system** combo box.
4. Press **Start** to format the device.

## 4. Upgrade Moncha.NET to Master

Since version 2.25 of Moncha.NET firmware it's possible to use Moncha.NET devices with Fiesta.NET software. To upgrade your Moncha.NET device to Moncha.NET Master please perform following steps:

1. Update your Moncha.NET device's firmware to latest version (higher or equal to 2.25).
2. Send your device serial number to [info@showtacle.com](mailto:info@showtacle.com). You can find the serial number in menu About, Serial, at the bottom of your Moncha.NET card or using activation software(\*).
3. We'll send you back activation file (MonchaMasterXXX.act, where XXX is your device's serial number).
4. Install latest version of Fiesta.NET. There is a little software utility called **Moncha for Fiesta Activation**. You can also locate **MonchaForFiesta.exe** in your Fiesta installation directory (typically C:\Program Files (x86)\Fiesta.NET).
5. Connect your Moncha.NET device to Ethernet, so you can find it using **Search .NET Devices** software.
6. Click on **Search for Moncha.NET** device.



*Moncha for Fiesta activation software*

7. The software will locate connected Moncha.NET devices on your network and you'll be prompted to select one.
8. After you select the device, you can click **Browse for activation file**. You have to locate the MonchaMasterXXX.act file.
9. Click **Write activation code** to activate your Moncha.NET device for Fiesta.

After your Moncha.NET device is activated, you can use even more Moncha.NET devices with your Fiesta software! It acts like a "master" device – if it's connected to network, it'll activate also your other Moncha.NET device(s).

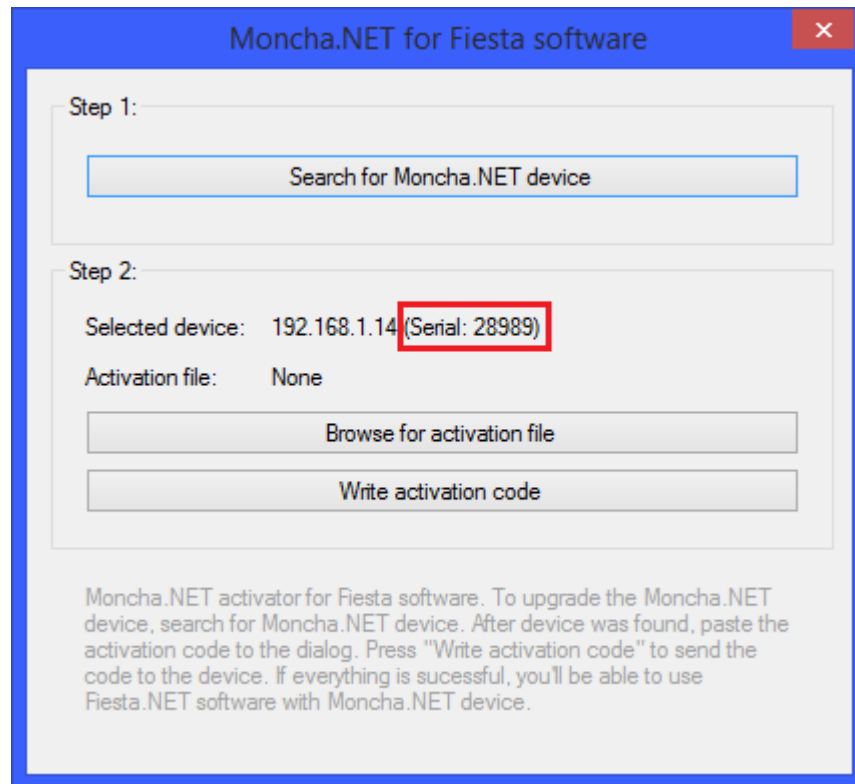
Just make sure, also the other (slave) devices use latest firmware higher or equal to 2.25!

#### 4.1 Find the serial number using activation software

You can use **Moncha for Fiesta Activation** software to find out the serial number of your Moncha.NET device. It's practical especially for Moncha.NET devices built inside laser.

**Before you want to check the device's serial number, please update device's firmware to 2.25 or higher!**

After update start the **Moncha for Fiesta Activation** software and press **Search for Moncha.NET device**. Serial number is displayed in **Selected device:** section. See following picture, the serial number is in red rectangle:



*Serial number of Moncha.NET device*